



AT THE
UNIVERSITY
OF GEORGIA®

OLLI TIMES

VOL. 20, NO. 5

JUNE 2022

WEBSITE: www.lli.uga.edu

PHONE: 706-542-7715

FACEBOOK: [olliatuga](https://www.facebook.com/olliatuga)

ANNUAL MEETING ROUNDUP

By Larry Dendy

OLLI@UGA members had much to cheer about when they met on Zoom May 18 for the Annual Meeting that celebrated OLLI's emergence from pandemic lockdown. Highlights for the program year that ends June 30 include:

- In-person classes resumed at River's Crossing after a two-year COVID-induced hiatus. The Curriculum Committee arranged for classes to be presented in-person, on Zoom and simultaneously in both formats (hybrid). Lunch & Learn classes also returned to Trumps Catering.
- Membership in OLLI surged to above 1,000, up from 907 last June. Growth was spurred by the Membership Committee's successful Taste of OLLI campaign that enrolled some 58 new members.
- In addition to membership dues and class fees, revenues included \$22,000 donated through the Annual Fund Drive managed by the Fund Development Committee and about \$6,000 from other gifts and events. The Finance Committee moved OLLI's accounts to a new bank to get better rates and arranged for a professional audit of OLLI finances—the first in five years—that showed no discrepancies.
- Other committees continued meeting and working during the year. The Hospitality Committee organized two picnics and a sold-out Beerganza at Southern Brewery. The Information Technology Committee is developing short videos to help members use OLLI COMM, which members indicated in a survey they prefer over another communication system. The Travel Study Committee, moribund for two years, began planning for two in-state trips and a possible international tour.

Continued on page 7

PRESIDENT'S COLUMN

By Dawn Torcivia



Dawn Torcivia

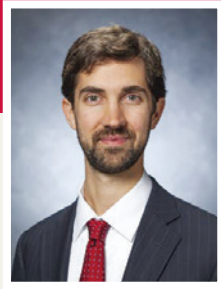
As my term as President of OLLI@UGA comes to a close, I realize how many wonderful people I've had the pleasure of working with over the past year. It would not be possible for OLLI to be the great organization it is without their support.

Thanks to the Board of Directors who were always there to help keep OLLI operating and growing. Our returning members include Laura Carter, Victor Gagliano, Doug Kleiber, Roy Martin, Navin Patel, and Liz Powell. Those leaving the board are Bill Barstow, Susan Dougherty, Freda Giles, and Penny Oldfather. We are so thankful for all you have contributed to OLLI and look forward to you remaining active as members.

I could not have picked a better group of officers: Mamie Mierzwak, Greg Mitsoff, and Linda DiPietro. Greg had the added responsibility of overseeing an audit this year and rose to the occasion. We will greatly miss Linda, a conscientious secretary who kept all of us on our toes. And I could not have asked for a more supportive President-Elect than Mamie. I am very confident that OLLI will be in great hands when she takes over in July.

I realize that one of the hardest working group of people is our committee chairs: Jane Amos, Jeanne Davis-Blair, Patricia Dixen, Susan Dougherty, Angela Greene, Teresa Hobson, Terry Kaley, Barbara Lewis, Mamie Mierzwak, Sue Myhal, Roy Martin, and Cher Snyder. Thank you for your dedication to your committee. Thanks also to those who help out in special leadership roles including Larry Dendy, William Loughner, and Greg Mitsoff.

Continued on page 3



Tim Meehan

FROM THE EXECUTIVE DIRECTOR

It is said in the OLLI network that, in the end, it all comes down to parking and coffee. I had a wonderful time catching up with staff and volunteers from the 125 other Osher

programs at the national conference in Denver a few weeks ago. One of the main takeaways is how much we do for each other in this organization.

We have members who turn the extraordinary into the ordinary and make the difficult look (comparatively) easy. All the SIG activities especially are coordinated by volunteers who love what they do – whether it’s hiking, playing cards, discussing the big topics, or learning how to take a better picture. And all these activities are included within our very reasonable membership fee. One Osher charges approximately \$500 a year for all-inclusive membership and classes.

We are also very fortunate to have the in-kind support from the Mary Frances Early College of Education. Some other OLLIs have to pay for their classroom space and are charged for other support (e.g., development, marketing) by their institutions. We are lucky to have both dedicated volunteers in the organization and professional staff available to us.

Parking is always a frustrating exercise – especially on college campuses. Every few years UGA reports on the costs on other campuses around the nation for staff and faculty to park. Yes, OLLI staff have to pay per month what an OLLI parking tag covers for a year, and we are one of the cheaper lots on campus. At the conference I heard of one OLLI that charged \$150 a year for parking – in a parking lot much busier than ours.

In the pre-COVID times, we were able to build the cost of parking into the classes (OLLI was always charged for the tags – around \$18,000 a year). When we returned to in-person classes, we discussed the fairest way of considering parking. Would it be fair for people who only take Zoom classes to be charged parking fees? Or include the cost in every membership,

whether one was taking classes or not? Would members accept an increase in the cost of classes for those taking classes on site?

We do understand that, toward the end of the year, the tag does not seem like the bargain that it appears in July – where else can you park in Athens for \$1.60 a month? – and this is something that we will look into for next year. But we believe that charging separately for parking is the most equitable way forward.

As we look forward to the summer, with both the film series and the Dartmouth Summer Lecture Series returning, I believe that we can also look back with gratitude for all of the volunteers, presenters, and staff who have worked so hard to keep us going through the pandemic, and we can look forward to rebuilding this learning community together.



**NORTH GEORGIA
WINERY DAY TRIP**
Thursday, October 20
olli.uga.edu/winetrip

SPONSOR SPOTLIGHT: WESLEY WOODS OF ATHENS

By Ann Allen

Sponsoring OLLI@UGA is a win-win situation for Wesley Woods of Athens, according to Melissa Cordell, director of sales and marketing for the local senior-living facility.

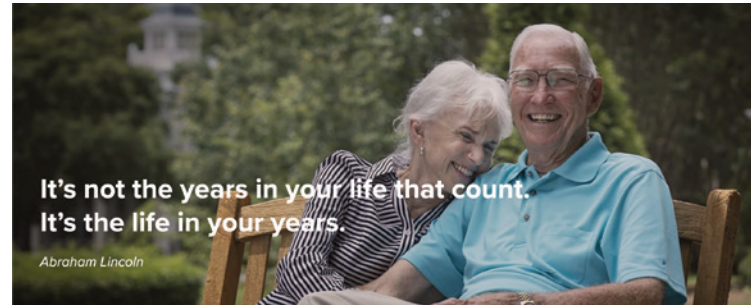
OLLI offers many engagement and learning opportunities for Wesley Woods residents, Melissa explains. “And OLLI also is a great local referral service for us.”

In its long-time sponsor role, Wesley Woods of Athens currently provides meeting space for several OLLI Shared Interest Groups (SIGs), including poker, mahjong, and book discussion. They also help sponsor/host OLLI membership-drive events and the volunteer reception. Many Wesley Woods residents are active members of OLLI@UGA.

Founded in 1953, Wesley Woods, Inc. was among the first organizations that, through the concern of the North Georgia Conference of the United Methodist Church, recognized and began to meet the growing



WESLEY WOODS
of ATHENS



need for accessible, independent senior living. Wesley Woods of Athens includes both the Lanier Gardens and Talmage Terrace complexes located behind Beechwood Shopping Center.

Wesley Woods, Inc. is headquartered in Atlanta. For more information, check the website at wesleywoods.org.

PRESIDENT'S COLUMN

Continued from page 1

A group of unsung heroes is the SIG leaders who have continued to meet and rally the troops during these challenging times. A special shout-out to Terry Kaley for her role as SIG coordinator.

Thanks to all of the volunteers who spend hours donating their time to OLLI ensuring that we maintain a quality organization that meets the needs and interests of our members.

We are so lucky to have such a dedicated staff to oversee the daily operations. Thanks for your persistence and hard work: Shelly Magruder, Amanda Nix, Ryan Robinson, Rita Healan, and Aimee Driver Dean. And a special thanks to our Executive Director, Tim Meehan, for your guidance and leadership.

Thank you to the staff of the Mary Frances Early College of Education who assist us across a range of projects and provide classrooms and office space.

Thank you especially to Dean Denise Spangler for her unflinching support and encouragement

I'd especially like to thank my husband, Bob, for supporting me. I couldn't have done it without your understanding and encouragement.

Thank you for the honor of serving as President this past year. I leave knowing that great things lie ahead for OLLI and its members under the leadership of Mamie Mierzwak and her board.

SUMMER PROGRAMS

Film Series and the Dartmouth Lecture Series will
be held in person at River's Crossing.
olli.uga.edu/summer

We're



BoomBash Event
(T. Meehan)



Euchre SIG
(L. Beckner)

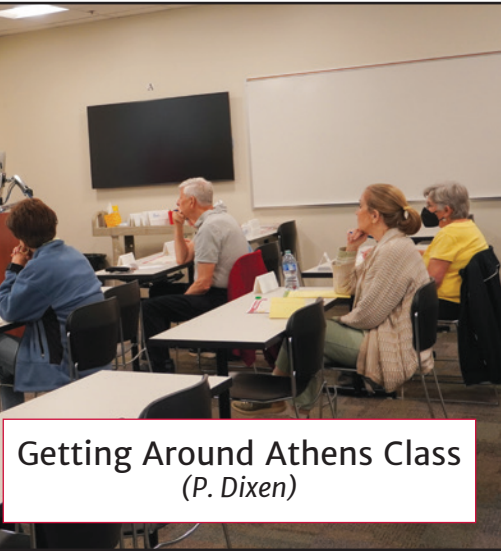


Mini Art Gallery
(S. Magruder)



Marketing & Commu
(DePalma)

OLLI!



Getting Around Athens Class
(P. Dixen)



Lunch & Learn
(P. Dixen)



Communications Committee
(P. Dixen's Staff)



Hospitality Committee
(P. Dixen)



Splashdown SIG
(G. Whiting)

WHY DO YOU WANT TO BE ON THE OLLI@UGA BOARD OF DIRECTORS?

As OLLI welcomes four new members to the OLLI@UGA Board of Directors, we asked each of them, “Why do you want to be on the OLLI board?” Below you’ll find their responses. Starting July 1, these new members join returning board members Laura Carter, Victor Gagliano, Doug Kleiber, Roy Martin, Navin Patel, and Liz Powell, plus President Mamie Mierzwak and Treasurer Greg Mitsoff, to represent OLLI members during the 2022-2023 fiscal year.



Jane Amos: “Since taking a class on adult development, I’ve been very interested in lifelong learning. I’m so impressed with the efforts and accomplishments of the OLLI staff and volunteers and want to do what I can to support this important organization.”



Norm Baldwin: “I was interested in serving on the OLLI board because I want to give back to the Athens community and am a career academic who believes in the virtues of lifelong learning.”



Alexis Winger: “I want to contribute whatever I can to ensure the continuation of the diverse opportunities in OLLI for enriching lives through the classes, travel, interest groups, and camaraderie that have so positively impacted my life for over a decade.”



Chuck Terry: “As the universe continues to open to in-person learning in addition to virtual classes, I hope, as a board member, to help Olli@UGA continue to provide new opportunities for activities, learning and growth for those retired and those contemplating retirement.”

BENEFITS SURVEY HIGHLIGHTS

By Greg Mitsoff

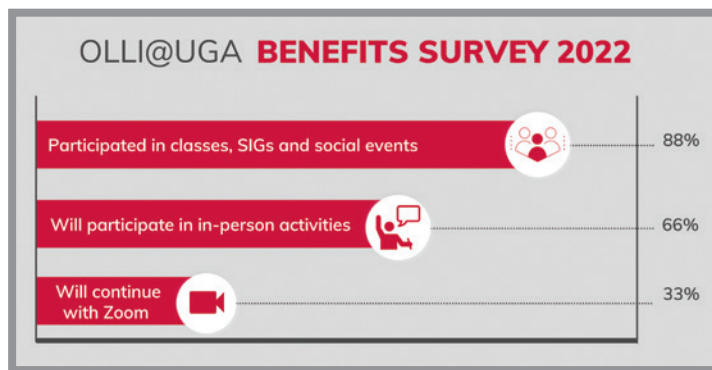
Members are happy with OLLI@UGA’s reopening of in-person activities this year after a long pause due to COVID-19, according to results of the annual benefits survey. Eighty-eight percent of survey respondents participated in classes, Shared Interest Groups (SIGs), or social events this year.

Assuming no further disruption in our ability to meet in person, two-thirds of the survey respondents plan to participate in classes in-person at River’s Crossing, take off-site class tours and attend Lunch & Learns at Trumps Catering in the coming year.

Though in-person classes are regaining steam, members also tout the importance of having the opportunity to participate online: One-third of survey respondents say they intend to continue to participate in OLLI@UGA classes via Zoom even as River’s Crossing has reopened.

The survey also revealed that some members aren’t aware of three valuable benefits, in addition to classes, SIGs and social events: the UGA ID card for use at establishments that offer student discounts; the UGA Library Card; and the discounted membership to the Ramsey Fitness Center facility and classes. Visit the OLLI@UGA website (olli.uga.edu/ugabenefits) for information on requesting these benefits offered by UGA.

Thanks to everyone who completed the survey. You helped confirm that OLLI@UGA is offering the kinds of benefits members are looking for, and your suggestions will be used by multiple SIGs and committees, as well as the Board of Directors, to continue to refine and improve our lifelong learning programs.



ANNUAL MEETING ROUNDUP

Continued from page 1

• New officers and members of the Board of Directors were introduced and eight members were recognized for outstanding service to OLLI.

“We have come a long way this year, COVID-wise,” Executive Director Tim Meehan summed up, “from the end of the beginning to what appears to be the beginning of the end.”

Added Dawn Torcivia, this year’s OLLI president: “Thanks to each of our members who has continued to support OLLI over these challenging times. Your faithful support of OLLI has kept us going.”

Tim and Dawn thanked UGA’s Mary Frances Early College of Education and its dean, Denise Spangler, for continued strong support and expressed gratitude to OLLI’s corporate sponsors. They also extended appreciation to OLLI staff members Shelly Magruder, Amanda Nix, Rita Healan and Aimee Driver Dean.

Mamie Mierzwak will become president July 1 and Greg Mitsoff will continue as treasurer. New board members are Jane Amos, J. Norman Baldwin, Chuck Terry, and Alexis Winger.

Mamie presented her goals for the coming year, developed with committee chairs. They include expanding in-person classes and activities while maintaining Zoom options; providing resources to ensure outstanding customer service for OLLI members; creating an ongoing recognition program for volunteers and staff; and “focus on having fun.”

Mamie also recognized recipients of service awards. They are Terry Kaley, Angela Greene, and Sue Myhal, Outstanding Achievement; Nan McMurry and Hammad Khan, Outstanding Presenter; Jim McGarvey, OLLI Scholar; and Patricia Dixen and Cher Snyder, Sustained Service.

Tim concluded his remarks by recognizing OLLI members who died during the year. They are John (Jack) Beach, Richard Bouldin, William Bray, Julie Cashin, Stephanie Foss, Carl Hoveland, Diane Klonowski, Norman Wood, and Jim Crosby.

The guest speaker for the meeting was Dr. Jenay Beer, a professor in the UGA Institute of Gerontology and director of the Cognitive Research and Education Center, which partners with OLLI for research on aging. A link to a video of the Annual Meeting is posted on the OLLI website and OLLI COMM.

Thank you OLLI partners and sponsors for your continued support.

Partner

University of Georgia Mary Frances Early College of Education

Sponsors

Wesley Woods of Athens

a•bridge: Aging Life Care Management

Boom Magazine

Carolyn Abney
Keller Williams Greater Athens

Cindy Karp Realty

Fortson, Bentley, and Griffin, P.A.

Trumps Catering

Uncommon Gourmet

University of Georgia Center for Continuing Education and Hotel

University of Georgia Speech and Hearing Clinic

WUGA Radio

THANK YOU TO THIS ISSUE’S CONTRIBUTORS:

Ann Allen

Larry Dendy

Patricia Dixen

Tim Meehan

Greg Mitsoff

Dawn Torcivia



OLLI@UGA
River's Crossing
850 College Station Rd.
Athens, Georgia 30602

NON-PROFIT
ORGANIZATION
US POSTAGE
PAID
ATHENS, GA
PERMIT #11



Mary Frances Early
College of Education
UNIVERSITY OF GEORGIA



River's Crossing
850 College Station Road
Athens, GA 30602-4811
Telephone: 706-542-7715



EMAIL: olli@uga.edu



FACEBOOK: [olliatuga](https://www.facebook.com/olliatuga)



WEBSITE: www.olli.uga.edu

Executive Director	Tim Meehan
President	Dawn Torcivia
President-Elect	Mamie Mierzwak
Co-editors, OLLI Times	Greg Mitsoff
	Larry Dendy
Production Assistant, OLLI Times	Tracy Coley